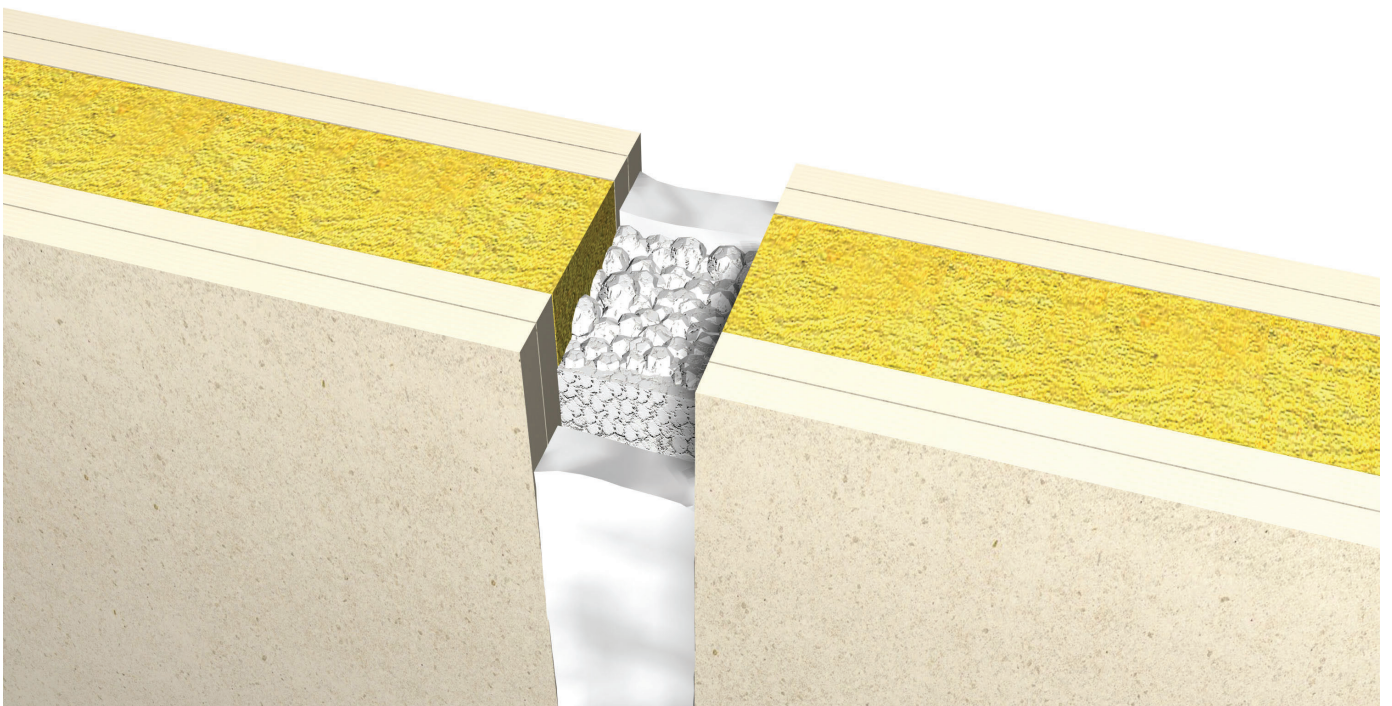


PROMASEAL® Acrylic Sealant Product Data Sheet

Fire stopping acrylic



www.promat-international.com





General description

PROMASEAL® Acrylic Sealant is an acrylic based sealant used to reinstate the fire resistance performance wall and floor constructions where they have been provided with apertures for the penetrations of multiple services, also to form linear gap seals where gaps are present within the wall and floor constructions and linear joints where wall and floor constructions abut.

PROMASEAL® Acrylic Sealant has slight intumescent properties that cause it to swell upon heating and can achieve fire rating upto 240 minutes.

Fields of application

Linear joints seals in flexible & rigid walls and floor construction.

Penetration seals around steel /copper pipes, electrical cables, cable trays & ladders.

System advantages / customer benefit

- Paintable
- Adhesions to most substrates
- Backing material can be either Rockwool (80kg/m³) or PE backing rods
- Halogen free, resist fungi & Vermin
- Tack Free, Water & UV resistant

Approvals

- UL-US & UL-C listed
- UL-EU Approval

Packaging

PROMASEAL® Acrylic Sealant is supplied in liquid form contained within 310ml tubes, other packaging on demand.

Storage requirements

- Store in cool and dry conditions - 3°C to 40°C
- Shelf life for original sealed containers is at least 18 months
- Once opened the container should be used swiftly

Safety instructions

- Please refer to the safety data sheet for additional advice



Technical data and properties

Colour	white/grey (others on request)
Consistency	paste
Specific gravity	1.52 -1.62 g.cm ³
Shrinkage	Approx. 12 %
Movement capabilities	Flexible upto 7.5 %
Application temperature	+5 to +40°C
Acoustic isolation (EN 10140)	48 dB
Air permeability (EN 1026)	600 pa- 100pa (0.0/0.0 m ³ /h/m ²)

Application instructions

- For good adhesion the surfaces of the building elements shall be free of any dust or grease and may need to be primed. On good clean, virgin concrete & masonry, no priming required.
- Ensure that the aperture and services in question are tested with PROMASEAL® Acrylic Sealant and the site conditions are within the application specification.
- An annular space needs to be present around the service to apply sufficient installation depth.
- All services and apertures need to be clean and clear of all dust and loose particles. The aperture temperature needs to be at +5°C or above at time of installation.
- The PROMASEAL® Acrylic Sealant is either gunned or trowelled into the aperture in or between the separating element/elements to a specific depth utilising various backing materials.
- Upon installation make sure that you install the PROMASEAL® Acrylic Sealant around all services needed.
- Once compacted, smooth off the PROMASEAL® Acrylic Sealant to produce a professional finish



Head Office

Promat International N.V.

Bormstraat 24

2830 Tisselt

Belgium

T +32 15 718 100

F +32 15 718 109

E info@promat-international.com

www.promat-international.com

www.promat-tunnel.com

www.promat-marine.com

www.promat-oilandgas.com